

Social Determinants of Health – Battling Food Insecurity



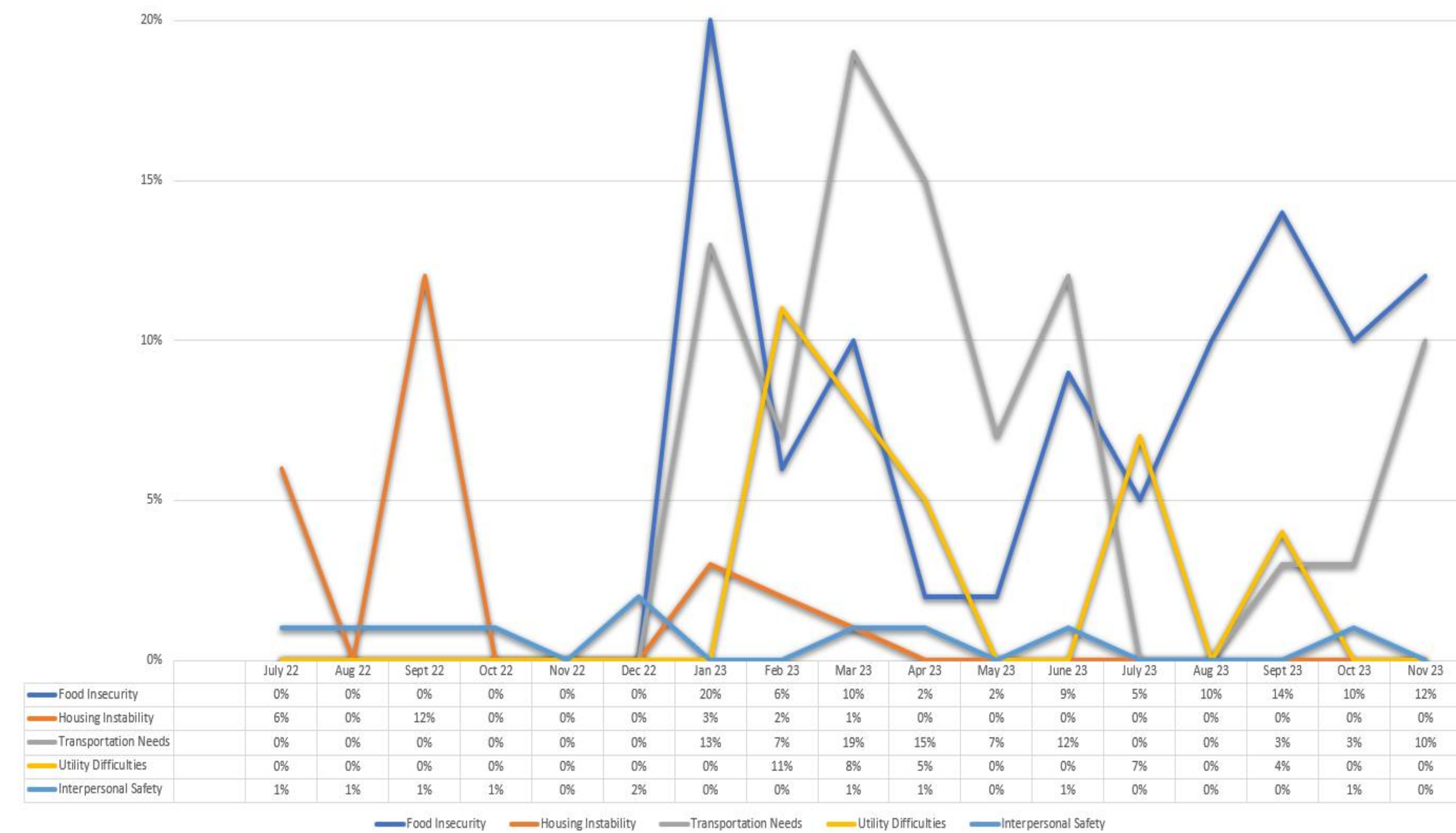
Laura Williams MSN, RN, CNML at Baptist Health La Grange, Kentucky

Purpose

- ❖ Baptist health La Grange is committed to serving the needs of the local community.
- ❖ Utilizing the *Coalition for a Healthy Oldham County Community Health Needs Assessment and Community Health Improvement Plan 2022-2025*, The Baptist Health La Grange Community Needs Assessment, and the Social Determinants of Health (SDOH) screening questions developed by CMS (Centers for Medicare and Medicaid) and KHA (Kentucky Hospital Association), patient community needs are monitored, and action planned.
- ❖ Unlike many metrics, seeing a decreased need in one element is not the intended outcome. Rather, it is necessary to keep a finger on the pulse of these community needs and provide various ways to address these needs as part of the strategic plan.

Relevance

- ❖ The Centers for Medicare & Medicaid Services (CMS) requires screening of patients for health-related social needs (Billieux et al, 2017).
- ❖ Baptist Health discovered through this screening process that the most frequently identified need by inpatients was that of food insecurity.

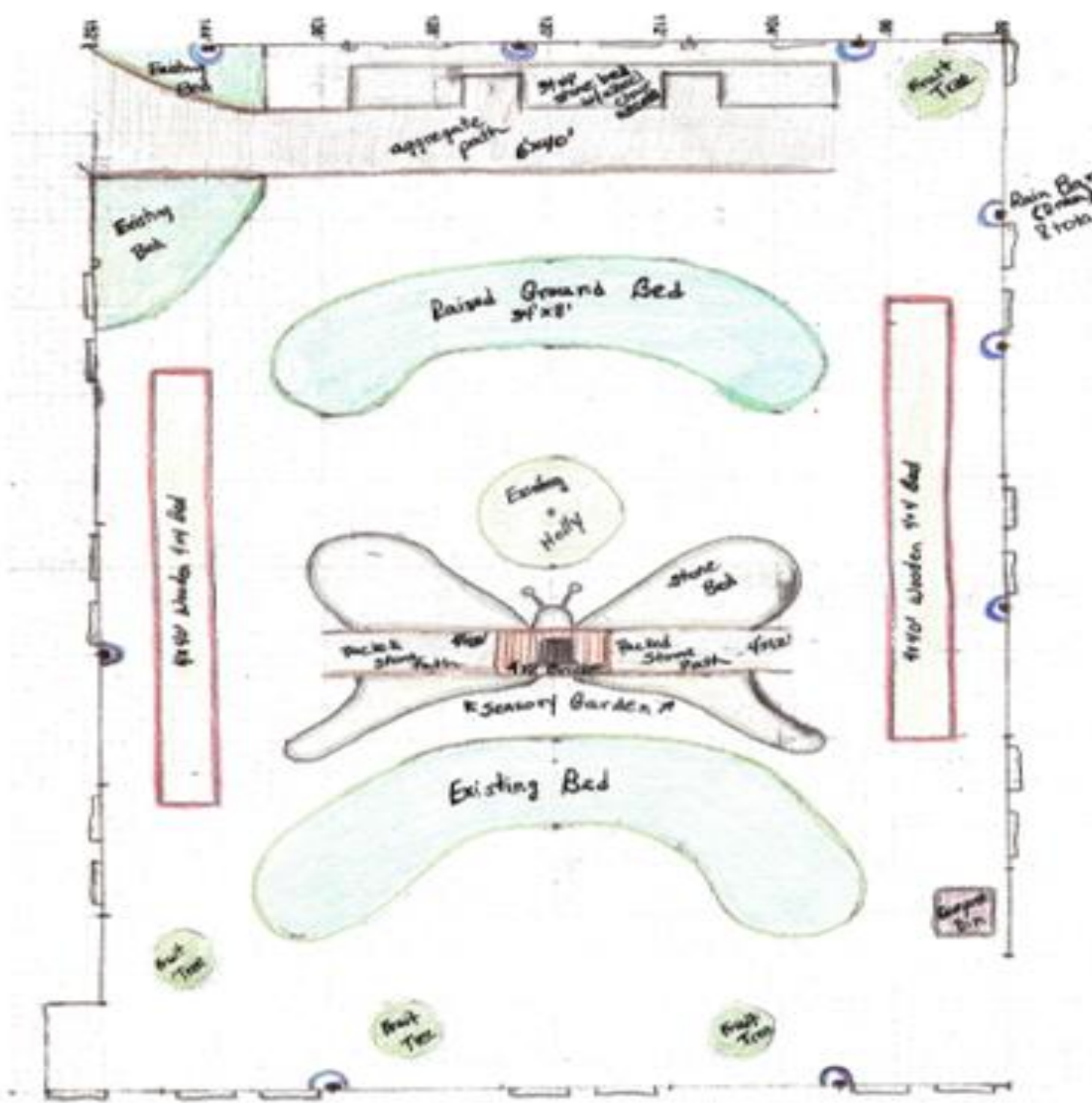


Implementation

The Genesis Garden was established in 2014 through a grant, community donations, and volunteer efforts. It was developed by Data Analyst, Sam Gaddie, and sustained by devoted members of our Wellness Committee. Produce is provided at discharge or via The Hope Health Clinic.



GENESIS GARDEN PROJECT SPRING 2014



Major Contributors:
 Baptist Health La Grange Medical Staff
 ResCare HomeCare
 Kentucky Mowing & Landscaping
 Gould's Discount Medical

Evaluation

Baptist Health addresses food insecurities

Staff report

Baptist Health La Grange is helping people in Oldham, Henry and Trimble County access healthy fruits and vegetables by growing them on site at the hospital.

A group of Baptist Health La Grange employees volunteer their time to tend a large garden in the hospital's courtyard known as the Genesis Garden. The garden includes seasonal favorites such as root vegetables, leafy greens, cucumbers, zucchini, tomatoes and a variety of herbs.

The Genesis Garden was started in 2014 with a grant and donations from the hospital's medical staff.

Lisa Houle, director of respiratory care at Baptist Health La Grange, led the project this year. She says it has been rewarding to see the impact the produce has on patients.

"We've had several staff members identify needs of patients and come to me, and we've gone out that morning and harvested, providing something for those patients to take home and they're all smiles when they get it," Houle said.

So far this summer, more than 400 pounds of fresh produce from the Genesis Garden has been donated to those in need. The food is given directly to patients with an identified need or distributed through the Hope Health Clinic, a non-profit organization providing low-cost healthcare to patients with no insurance or deductibles they cannot afford.

Baptist Health La Grange supports Hope Health by providing the space and utilities for the clinic, located on the hospital campus.

A group of Baptist Health La Grange employees volunteer their time to tend a large garden in the hospital's courtyard known as the 'Genesis Garden.'

CMS and KHA have challenged hospitals to address social determinants of health. This project has resulted in a sustainable impact on the patients and community to address a patient identified need.

Implications for Practice

Baptist Health La Grange will continue to screen for all social determinants of health, addressing those identified most frequently by the patients served.

References

- 1.) Billieux, A., MD, DPhil, Verlander, K., MPH, Anthony, S., DrPH, & Alley, D., PhD. (2017). Standardized Screening for Health-Related Social Needs in Clinical Settings: The Accountable Health Communities Screening Tool. National Academy of Medicine Perspectives, 1-9.
- 2.) Staff Report. (2023, Aug 31). Baptist Health addresses food insecurities. The Oldham Era, News (B8).
- 3.) United States, U.S. Department of Health and Human Services, Centers for Medicare & Medicaid Services. (2017, September 05). Accountable Health Communities Model. <https://innovation.cms.gov/initiatives/ahcm>. 2 <https://nam.edu/wpcontent/uploads/2017/05/Standardized-Screening-for-Health-Related-Social-Needs-in-Clinical-Settings.pdf>